

GLASS PAINT EFFECT 250ML

HIGH-COVERING ABRASSION PROOF GLASS PAINT EFFECT


The Montana GLASS Paint is a semi transparent effect paint that can re-color, brighten up or create innovative effects on glass. Its Nitro-Acrylic combination base dries fast enabling users to create shadows, sea-glass or frost like effects. Ensure surfaces are clean, dry and free of oil or dust free before application. Montana GLASS Paint can re-color, brighten up or create innovative effects on glass. It is Nitro-Acrylic combination paint, which dries with a semi transparent finish. Create shadows, sea-glass or frost like effects. Ensure surfaces are clean, dry and free of oil or dust free before application.

Before use, remove the nozzle and turn the can upside down to let the safety ring to fall out. Shake the can well for 2-3 minutes! Re-apply the nozzle and test spray on a non-visible area for compatability to the substrate. Montana GLASS Paint may not be compatible with plastic or synthetic glassware. Apply at a distance of 15-20cm from the substrate in one or more even layers. Adding layers will increase color opacity for greater

warmth and ambiance. Perfect for frosting window glass and creating milk glass, or sea-glass like finishes to areas applied.

At 20°C, Montana GLASS Paint is dust dry after 3-4 minutes, dry to handle after approximately 45-60minutes and fully cured after 6-8 hours. Drying time varies subject to temperature, humidity and thickness of coating. Allow 4-5 minutes drying time between coats. Over painted with Acrylic lacquers is possible once dry and cured. Montana VARNISHES can also be applied to seal and further protect once cured. Montana GLASS Paint is not food-safe.

SEMI-TRANSLUCENT PAINT
PERFECT FOR APPLICATION ON GLASS
WEATHER RESISTANT
FAST-DRYING

	
1210 Almond TNR 482977	6115 Teal TNR 483103
	
3010 Coral Red TNR 482984	6220 Mint TNR 483110
	
3225 Rosé TNR 482991	9000 Black TNR 483134
	
4170 Orchid TNR 483035	9100 White TNR 483127
	
5055 Bay Blue TNR 483059	



VINTAGE-EFFECT 400ML

VARNISH FOR A YELLOWISH VINTAGE LOOK

Ever found yourself lost in the romance of second hand shops or yard sales, looking at all the retro and vintage objects and wondering what stories lay behind the aging facade? Now you too can create that flair yourself on almost any object or surface and upcycle it into something inspiring or functional. Whether you're an experienced DIY-ist or new to art and craft, Montana VINTAGE Spray Filter is the tool for your retro project. The Montana VINTAGE Spray is a solvent-based, high quality acrylic, low pressure effect spray. The yellow transparent coating is a UV-resistant, quick drying semi-gloss finish that brings best results on white or light colors. Montana VINTAGE Spray Filter is perfect for all creative workers that are trying to create a vintage or aged looking effect. Are you a bit of a photographer? Applying Montana VINTAGE Spray to your favorite black and white photos can create an authentic looking vintage touch. Take the idea further by framing the photos and treating the frames as well. Signage and furniture can also become a center piece for any home of business. With multiple layers of Montana VINTAGE Spray Filter and some sanding in between coats, new objects can appear as if they have a longer story to tell. For best results use the flat jet nozzle on the can and apply in 2-3 thin, even coats. The Montana VINTAGE Effect Spray can be combined with Montana VARNISH for additional protection once completely cured. Ideal for use on surfaces that are painted or printed, on furniture, photos and many other substrates. To increase the effect light sanding can be undertaken between coats.



EV1050 Vintage Yellow

TNR 477041



UV-EFFECT 400ML

TRANSPARENT UV-SPRAY WITH FLUORESCENT EFFECT
ONLY VISIBLE UNDER INCIDENT UV LIGHT!

Montana UV-EFFECT is a transparent effect paint that is only visible under direct UV light. Able to be sprayed on nearly any substrate, the colorless and semi-gloss paint is not visible in sunlight rather illuminates when exposed to UV light with a glowing, blue-purple color. Ideal for indoor use, the luminous spray can be a great tool not just for making art or art happenings, but also in practical contexts such as Guerilla Marketing, night clubs, venue and property marking. The Montana UV-EFFECT spray can be applied to numerous substrates such as coated and uncoated screens, masonry, wood, glass and more. The UV light effect becomes more prevalent, the more coats are applied particularly when applied with a stencil.



The UV-EFFECT spray is compatible with other color and effect coatings within the MONTANA-CANS range as long as total curing time has occurred. (24-48 hours). The Montana UV-EFFECT spray available in the usual 400ml can format for easy and comfortable use. Applying in thin, multiple layers will enhance and increase the UV-EFFECT sprays ability to produce a vibrant glow effect. To add durability and protection, the fully dry and cured surface can be sealed with Montana VARNISH Spray in Matt, Semi-Gloss or Gloss. Always test spray on a non-visible area to check compatibility of lacquer or paint.



UV1000 UV Effect Transparent

TNR 449826



METALLIC EFFECT 400ML

HIGH-COVERING ABRASSION PROOF METALLIC EFFECT

The Montana METALLIC Effect Sprays bring state of the art paint technology to traditional metallic effect colors. Loaded with a Montana Standard cap, these cans provide excellent delivery and reliability under medium pressure output. Not only are the Montana METALLIC Effect colors ideal for application on functional objects such as bikes and furniture, they can also add a metallic flare to any creative or artistic project on paper, cardboard, primed canvas, wood, glass, metal, ceramics, porcelain, stone, acrylic and other paintable materials. Made from an Acrylic-Nitro Combination base, the paint surface dries to a durable semi-gloss finish which is both hard wearing when cured (24+ hours) as well as flexible. Offering great lightfastness, the Montana METALLIC

Effect line can also be combined with the Montana GOLD, Montana BLACK and Montana ACRYLIC marker lines.

For best results shake can vigorously for approximately 3 minutes before use and apply at a distance of 15cm - 20cm to a pre-primed substrate. Re-shake between intervals to assure settled pigment is re-mixed. To enhance color result even further, pre-prime substrate with a similar Montana GOLD color as base. Apply in thin multiple layers, varying application strokes from vertical to horizontal on each run. Optimum use temperature is between 10 and 15 degrees Celsius. Drying time is normally around 10 mins for dust dry, 20 minutes for touch dry and 24 hours for total curing.

	EMC1010 Metallic Titanium	TNR 494130		EMC5030 Metallic Ice Blue	TNR 448713
	EMC1030 Metallic Aztec Gold	TNR 494123		EMC6040 Metallic Avocado Green	TNR 494116
	EMC1050 Metallic Gold	TNR 448683		EMC6210 Metallic Tennessee	TNR 448720
	EMC2010 Metallic Champagne	TNR 448690		EMC6250 Metallic Caribbean	TNR 448737
	EMC2050 Metallic Copper	TNR 448706		EMC7010 Metallic Silver	TNR 448744
	EMC3020 Metallic Red	TNR 473043		EMC7060 Metallic Graphit	TNR 448751
	EMC3110 Metallic Rosé	TNR 473050		EMC9000 Metallic Black	TNR 448768
	EMC4230 Metallic Plum	TNR 473067			

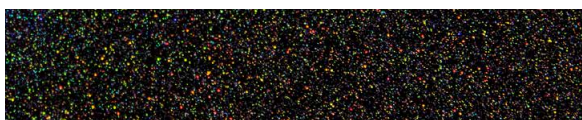


HOLOGRAM GLITTER 400ML

TRANSLUCENT METALLIC GLITTER PARTICLE EFFECT

HOLOGRAM Effect Spray available! The translucent semi gloss, nitro combi base is the vehicle carrying the high quality fine holographic glitter particles for a sensational metallic effect that can add a totally new dimension to all kinds of surfaces. From paper to cardboard, primed canvas, wood, glass, metal, ceramics, porcelain, stone, acrylic and just about any other paintable surface. Once applied, the semi gloss lacquer layer will have embed a fine distribution of holographic particles over the substrate. The more coats applied, the greater the saturation of the holographic particles and thus increasing the intensity of the effect. Applying a layer (or several layers) of Montana Gloss Varnish will not only protect the surface of your work, it will also allow more light to reflect on the holographic particles and enhance the effect further. The final result will significantly be influenced by the color and gloss level of the undercoat.

For best results we recommend applying the translucent HOLOGRAM Glitter Effect over Montana GOLD, Shock Black SH9000 or a dark colored underground that has had time to cure, allowing contrast to occur for the glitter particles to reflect on!



Hologram Glitter Effect (on black ground)

TNR 463051



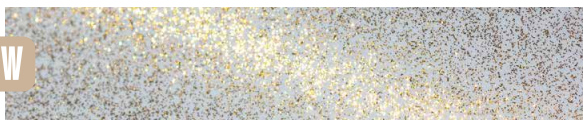
GLITTER EFFECT 400ML

GLOSSY TRANSLUCENT VARNISH WITH SILVER GLITTER PARTICLES

Glossy translucent paint with silver colored glitter particles for a metallic effect giving objects and artworks of all kinds a refined finish. Applicable on many different surfaces such as paper, cardboard, primed canvas, wood, glass, metal, ceramics, porcelain, stone, acrylic and other paintable materials. After being applied, a thin shiny lacquer coat will show with a fine distribution of glitter particles. Further coats will lead to a higher density of particles and intensify of the effect. We recommend finishing your project with the Montana VARNISH Gloss to enhance the metallic effect. Please consider that the achieved final result will significantly be influenced by the color and gloss level of the undercoat. The glitter particles are carried in a clear base that can easily be covered with many common lacquer types. Can be combined with Montana GOLD, Montana ACRYLIC markers and conventional acrylic paints.

 WWW.MONTANA-CANS.COM/HOW-TO

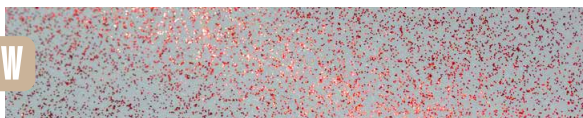
NEW



EG Dusty Gold

TNR 495076

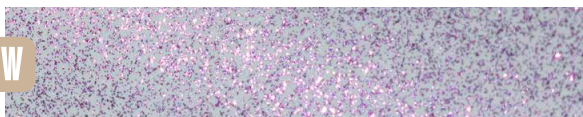
NEW



EG X-Mas Red

TNR 495083

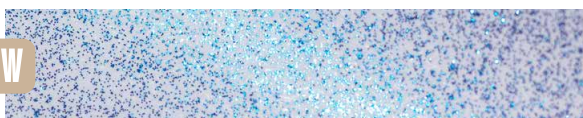
NEW



EG Amethyst

TNR 495106

NEW



EG Cosmos

TNR 495175



EG Silver

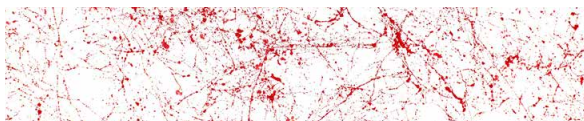
TNR 415425



MARBLE EFFECT 400ML

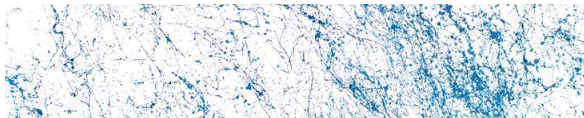
HIGH-COVERING SPRAY PAINT FOR A DECEIVINGLY REALISTIC MARBLE EFFECT

High-covering spray paint for a deceivingly realistic marble effect – Now available in two new colors: Marble Red and Marble Blue! The Montana MARBLE Effect can be used on many different surfaces such as paper, cardboard, primed canvas, wood, glass, metal, ceramics, porcelain, stone, acrylic and other paintable materials. The MARBLE effect is formed by very fine colored paint strands on the surface area of the object in question. The area which is to be sprayed is not entirely covered and will stay partially visible. Can be top-coated with many common lacquer types once thoroughly dry. MARBLE Effect can be combined with Montana GOLD, Montana ACRYLIC markers and customary acrylic paints. The MARBLE Effect can come standard with a calligraphy that can be adjusted to create spray output lines in vertical, horizontal or variations thereof.



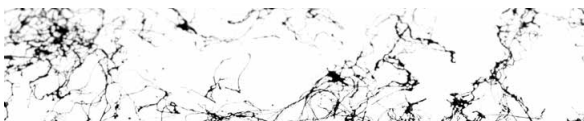
EM3000 Red

TNR 493935



EM5000 Blue

TNR 493942



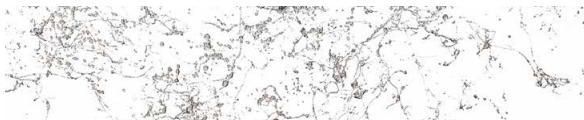
EM9000 Black

TNR 415357



EM9100 White

TNR 415364



EMSILVER Silver

TNR 415371

NEW



EMGOLD Gold

TNR 508134



CRACKLE EFFECT 400ML

EFFECT LACQUER FOR A SPECIAL VINTAGE LOOK

CRACKLE lacquer for the special crackle-look (e.g. for a vintage or used-look). Prior coating of your object is necessary with Montana GOLD, Montana WHITE, Montana VARNISH or Montana PRIMER. After extensively applying CRACKLE Effect to your primed area, the distressing (cracking) process will begin to occur. Must be applied to completely dry base coat. The CRACKLE spray is high-covering and can be top-coated when completely dry and cured. Can be combined with Montana GOLD, Montana ACRYLIC markers and customary acrylic paints. Available in the following colors: gentian blue (RAL 5010), patina green (RAL 6000), squirrel grey (RAL 7000), copper brown (RAL 8004), pure white (RAL 9010) and traffic black (RAL 9017).



WWW.MONTANA-CANS.COM/HOW-TO



EC8004 Copper Brown RAL8004

TNR 418471



EC9010 Pure White RAL9010

TNR 418488



EC9017 Traffic Black RAL9017

TNR 418495



EC5010 Gentian Blue RAL5010

TNR 418440



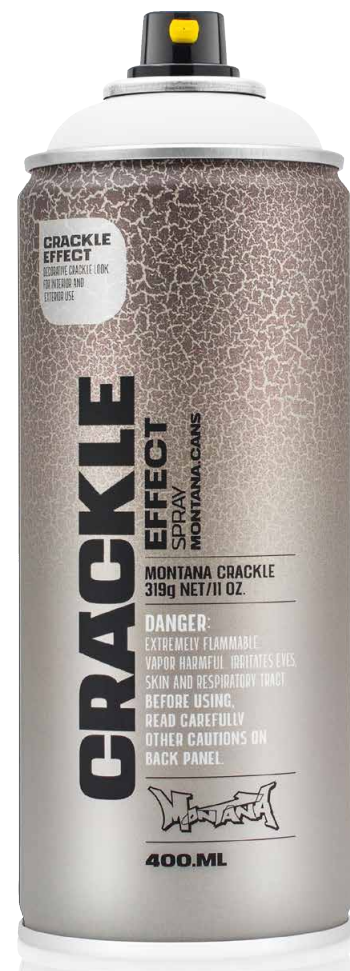
EC6000 Patina Green RAL6000

TNR 418457



EC7000 Squirrel Grey RAL7000

TNR 418464



GRANIT EFFECT 400ML

WATER-BASED SPECIAL EFFECT SPRAY PAINT

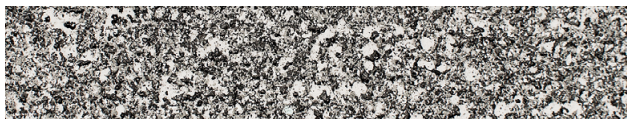
Water-based special effect spray paint with fine plastic particles for a deceptively realistic granite effect. Applicable on many different surfaces such as paper, cardboard, primed canvas, wood, glass, metal, ceramics, porcelain, stone, polystyrene and other paintable acrylic materials. The Montana GRANIT Effect is very high covering. For best results it is advisable to prime your surface when using light colored GRANIT Effect shades, particularly when painting on dark surfaces. We recommend using the Montana PRIMER or the Montana TEXTURE spray. The latter will enhance the GRANIT look even more. Can be top-coated once thoroughly dry. Can be combined with Montana GOLD, Montana ACRYLIC markers and standard acrylic paints. The GRANIT Effect spray also works well as a structure spray. Lightly coat dry areas to receive the desired granite-look. Available in the following colors: light grey, grey, brown and black.

 WWW.MONTANA-CANS.COM/HOW-TO



EG7000 Light Grey

TNR 415388



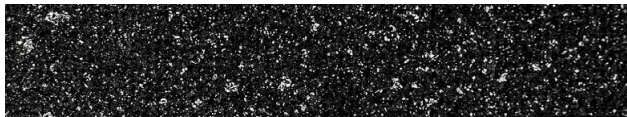
EG7050 Grey

TNR 415395



EG8000 Brown

TNR 415418



EG9000 Black

TNR 415401



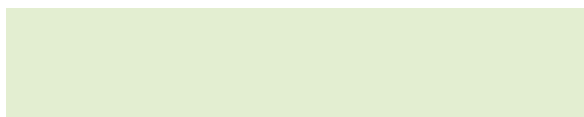
NIGHTGLOW EFFECT 400ML

NEW QUALITY GLOWS LONGER & MORE INTENSE

The Montana NIGHTGLOW not only now has a new improved formula, it is also complimented by a second color in the range called luminescent-orange! The new and improved Montana NIGHTGLOW quality is a high-grade acrylic paint which contains luminescent pigments, that store light (absorbed energy) and emit the light in darkness. The new formula exhibits higher light emission for longer duration, making the Montana NIGHTGLOW's high-grade luminescence-pigments even more powerful. This luminiscence-effect is only visible during total darkness. The period is depending on intensity or irradiation and thickness of paint layer (it is recommended to apply multiple layers of NIGHTGLOW paint lacquer on the primed surface). The highest possible degree of shining is immediately after loading the painted object then it fades away. For indoor and outdoor applications. For best glow effects use in a completely dark environment without any light sources. Use a strong source of light to load the effect paint temporarily.

The effect spray is suitable for all smooth, rough or light responding primed surfaces. e. g. metal, wood, hard plastics, primed carton, walls etc. We recommend to prime the ground with Montana GOLD Shock WHITE 9100 to achieve best glow effects. Consider longer drying time depending on substrate. Limited resistance to weathering, light and UV-influences. To improve resistance, we recommend to varnish with Montana VARNISH Gloss 400ml. Recommended to use with Montana Fat Caps (e.g. black / orange).

Available colors: luminescent-green & -orange



NG1000 Luminescent Green

TNR 448485



NG2000 Luminescent Orange

TNR 448492



CHALKSPRAY 400ML

HIGH QUALITY PIGMENTED CHALK PAINT

The CHALKSPRAY is a chalk-based pigment spray that is ideal for outdoor temporary marking as well as for indoor studio artwork. Available in 10 powerful color shades that are deep matte and high covering. Montana CHALKSPRAY can be applied on various surfaces such as sidewalks, walls, cardboard or canvas. Depending on weather conditions and climate outdoor marking lasts between several days to several weeks. It fades more quickly during extended periods of rain or in high traffic areas. On non-porous surfaces like glass or metal the pigments can be removed easily. Removal from porous surfaces may take longer. Montana CHALKSPRAY impresses by its feel and look - the typical rough chalk effect.



CH1020 Yellow	TNR 376085
CH2010 Orange	TNR 376092
CH3000 Red	TNR 376115
CH4050 Pink	TNR 376122
CH4150 Violet	TNR 376139
CH5050 Blue	TNR 376153
CH6050 Green	TNR 376177
CH6120 Turquoise	TNR 376184
CH9000 Black	TNR 376221
CH9100 White	TNR 376238

CHALK HAS VERY SPECIAL AESTHETICS - AND MONTANA CHALKSPRAY BRINGS THOSE AESTHETICS INTO A SPRAY THAT WORKS ON ALMOST ANY SURFACE!



MONTANA SPIDER EFFECT 150ML

HIGHEST QUALITY SPRAY PAINT

Originating from the auto industry, the Montana Black Spider 150ml is proudly the original spider effect can. This easy to hold 150ml can delivers an impressive black color web-like spray output thanks to its high-pressure output. If applied close to the substrate, the effect results in tighter web lines. If applied further away from the substrate, the effect becomes more organic and loose. Loved by users creating calligraphy orientated works, the line output can be changed to create sketchy, pencil-like linework when the original FLAT JET WIDE CAP is replaced by a SKINNY or NEEDLE cap, as found in the Montana Cap range.



Spider Black TNR 325489

